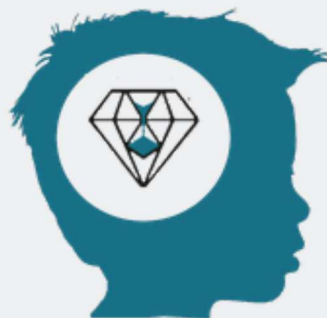


TCD INFANT & CHILD RESEARCH LAB

Research Information sheet

This leaflet provides information on the study
and aims to answer any questions you may
have.



DIAMOND Study



@tcdinfantchildresearch



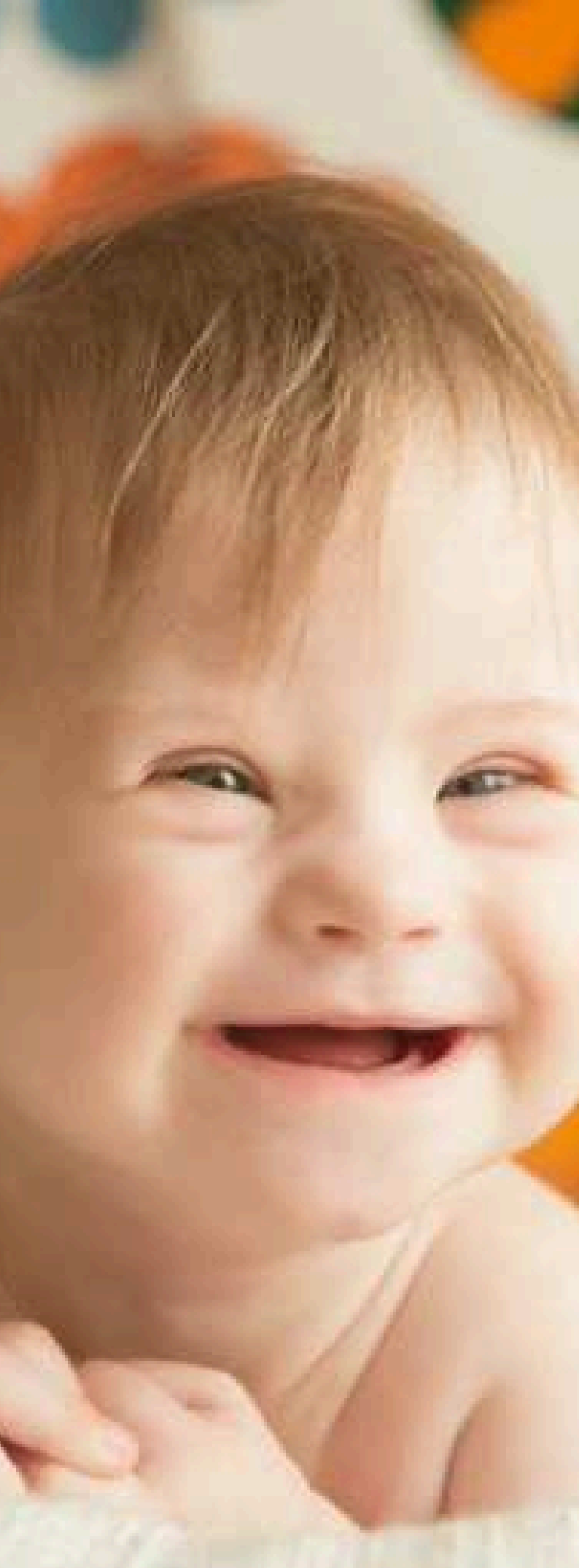
Who are we?

We are researchers in the School of Psychology, Trinity College Dublin. In our Infant and Child Research lab, we study parent-child interaction and its contribution to infant and child development.

What is the research about?

We're interested in how children with Down Syndrome and their parents interact during play. This may help us understand what aspects of parenting are important for development in Down Syndrome.

In our research, we observe, record and analyse how children and their parents respond to each other, and how these patterns of interaction relate to child development. Even very young babies actively participate and initiate interaction with their parents and other family members. Using observation tools we study this behaviour in detail. We are particularly interested in the role of parents' play in interactions. We are finding out more about how parents interact with and respond to their children.



What is involved in the study?

Your child will complete a play-based developmental assessment (including motor, language & cognitive skills). We think this will take around 1 hour – 1.5 hours. We will also observe you and your children playing with some toys together. We are interested in the kinds of games, activities and ordinary interactions that families engage in at home everyday.

You will be asked to complete some questionnaires about you and your family, such as on your parenting styles and beliefs, and your child's temperament. In total, the study will last no more than 3 hours.

There are no risks involved in your or your child's participation. You don't have to take part if you don't want to and you can stop at any time you want. If you have any questions or if anything is unclear, just ask the researcher to explain it to you.



What will happen to the findings?

Your data will be treated in the strictest of confidence. Information will be stored safely with access only available to the research team and it will be destroyed after 5 years. The anonymised results will be included in a thesis and may be used in publications and presentations. Your study data will be handled as confidentially as possible. If results are published or presented, individual names and other personally identifiable information will not be used.

All data will be anonymously coded (names and addresses will not be linked to that data), and links can only be made between questionnaire data and the observation data by the researchers.

Observational data will only be used for the purpose of research. It is not possible to anonymise this as you can of course be seen and heard on the video recordings. If you would be happy to allow us to use your stored video data for other research questions in future research projects under the same strict conditions of storage, anonymity and confidentiality, we will ask you to sign a separate consent form also.



Participation in this study is voluntary. You do not have to answer any question you do not want to answer. If at any time and for any reason, you would prefer not to participate please inform us. You can take a break, stop and continue at a later date, or stop altogether.

You may withdraw from this study at any time after your visit. If you decide to withdraw from this study, the researchers will ask you if the information already collected from you can be used.

You have the right to access any identifiable information stored about you. You also have the right for these records to be destroyed up until the date when the project is submitted. You may also request to access data on your child.

Participation will involve no cost to you and you will not be paid for participating.



Infant and Child Research Lab
Trinity College Dublin



Trinity College Dublin
Coláiste na Tríonóide, Baile Átha Cliath
The University of Dublin

Telephone: 0830680635

Address: Infant & Child Research Lab, School of
Psychology, Áras an Phiarsaigh, Trinity College,
Dublin 2.

Desiree Grafton-Clarke (PhD student)

Email: graftond@tcd.ie

Dr Jean Quigley (research supervisor)

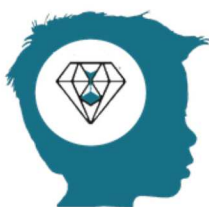
quigleyj@tcd.ie

Dr Elizabeth Nixon (research supervisor)

enixon@tcd.ie

Professor Eleanor Molloy (research supervisor,
consultant neonatologist & paediatrician)

eleanor.Molloy@tcd.ie



DIAMOND Study



Research Funded by the National Children's Hospital